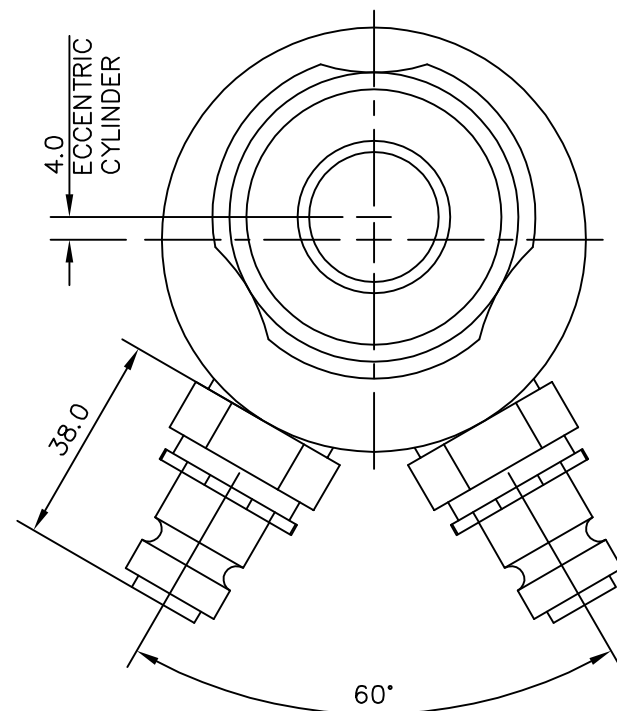
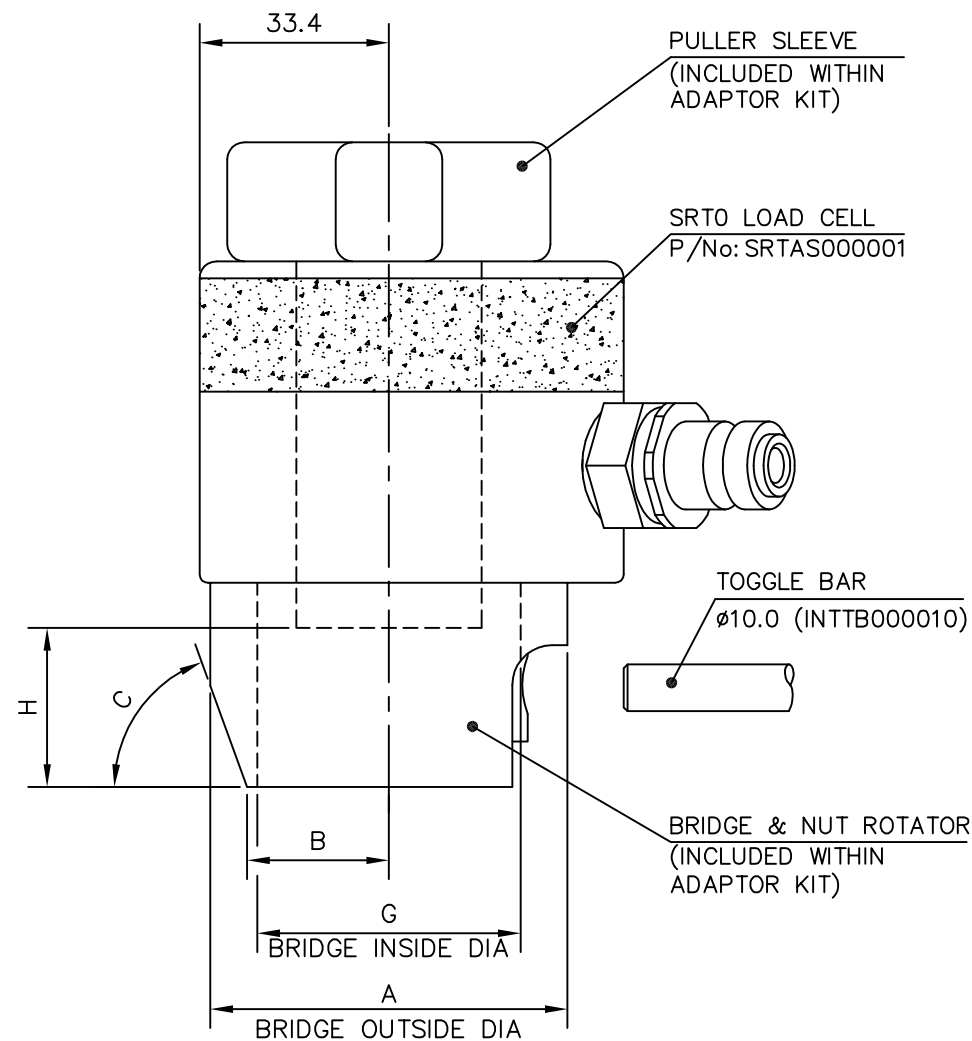
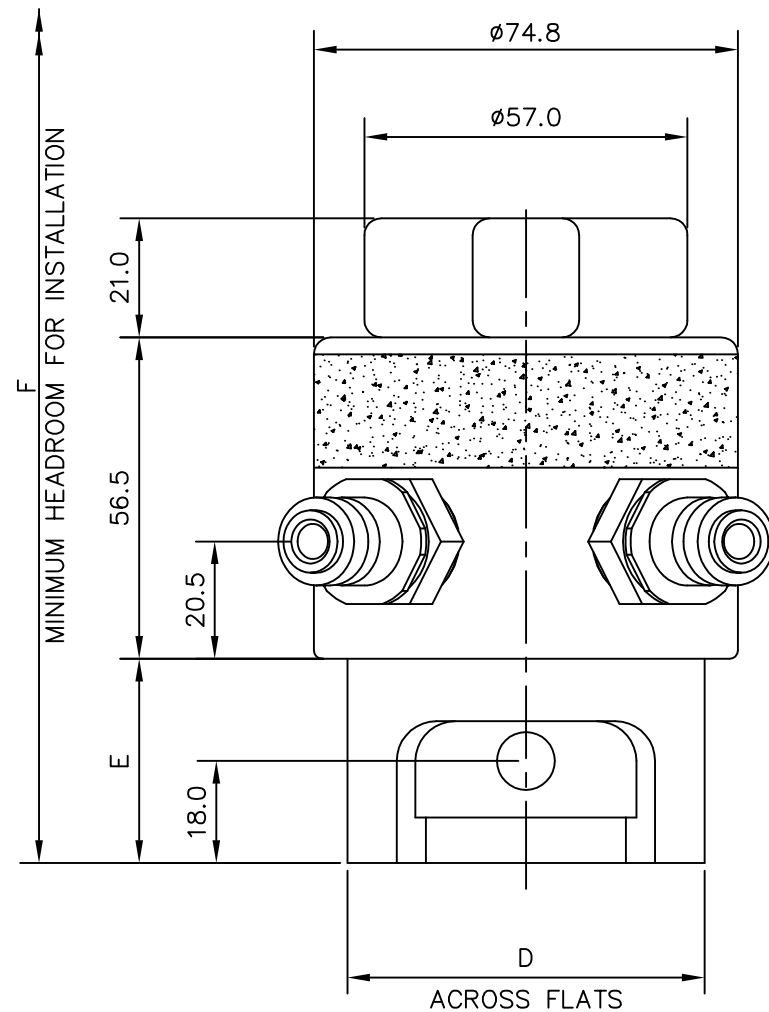
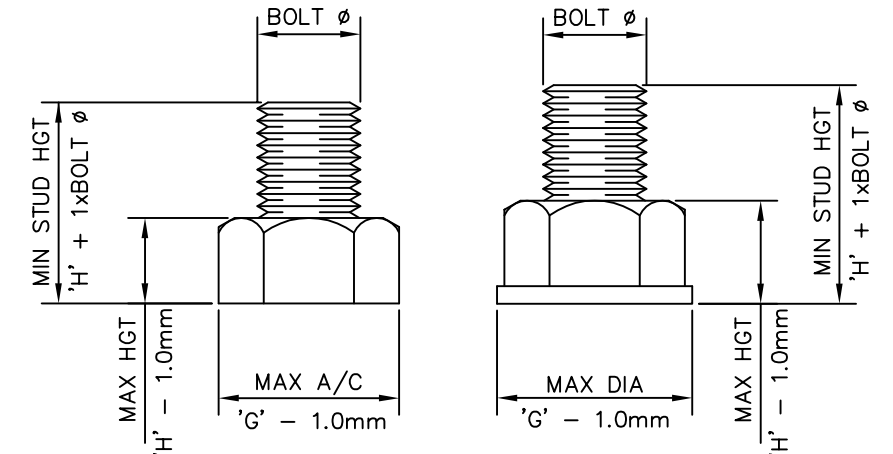


Dimensions in MILLIMETRES

DO NOT SCALE



BOLT/NUT INFORMATION



STD BOLT/NUT

BOLT/NUT & WASHER

SRT0 TENSIONER SPECIFICATIONS

MAX WORKING PRESSURE : 1500 Bar (21,750 psi)

MAX STROKE : 10 mm (0.394")

HYDRAULIC AREA : 1067 mm² (1.65 in²)

LOAD AT MWP : 160 kN (35971 lbf)

TENSIONER FEATURES

– PISTON STROKE INDICATOR

- QUICK CONNECT ADAPTOR KIT


BOLT DIA	NUT A/F	ADAPTOR KIT PART NUMBER	A mm	B mm	C mm	D mm	E mm	F mm	G mm	H mm
3/4" UNC	1-1/4"	SRTAS000002	63.0	25.0	70*	—	36.0	143.0	45.0	22.0
7/8" UNC	1-7/16"	SRTAS000004	63.0	25.0	70*	—	36.0	146.0	45.0	25.0

M20 x 2.5	30mm	SRTAS000006	63.0	25.0	70°	—	36.0	143.0	45.0	19.0
M22 x 2.5	32mm	SRTAS000008	63.0	25.0	70°	—	36.0	146.0	45.0	21.0

NOTE: METRIC ADAPTOR KITS DESIGNED TO SUIT NUTS TO BS3692 (i.e. NUT HEIGHT APPROX 0.8 x BOLT DIA)

© SPX Bolting Systems

The information on this sheet is on licence to SPX Bolting Systems. It is confidential and must only be used for the purpose for which it is supplied. It must not be copied or communicated to any third party without permission in writing from SPX Bolting Systems.

General Tol. ±0.25 USO	Quantity —	Material —	Heat Treatment —	Finish Processes —
Surface Finish 3.2 μm USO				
Geometric Tol.	Drawn by I.O'BRIEN	Checked by T.DODDS	File Name —	Date 07/11/2011
<div>⊙ 0.10</div> <div>∥ 0.20</div> <div>⊕ 0.25</div>			<div>Title SRT0 HYDRAULIC TENSIONER GA</div> <div> <div>Drawing Number SRTGA000001</div> <div> <div>Edition 1</div> <div>Sheet 1/1</div> </div> </div>	

1	BOLT DATA ADDED	25/9/13	D.CAMPBELL	I.O'BRIEN
Rev	Revision Description	Date	Signature	Checked